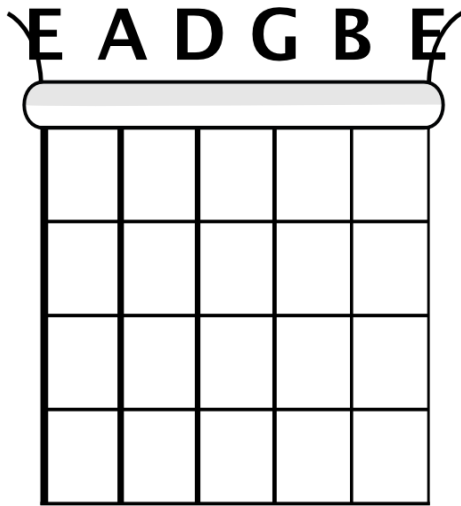


## Traditional Irish Guitar | Beginner 2 | Course Notes

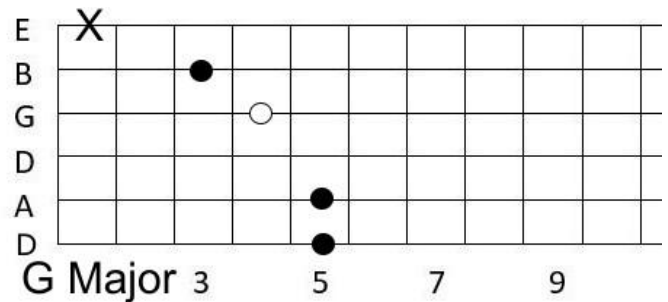


These are the names of the guitar strings. For Drop D tuning, you lower the bass E string (on the left) by one note to D.

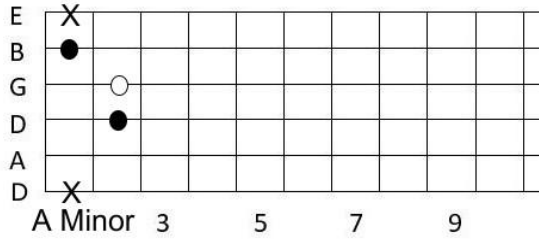
### Chords in this course

G, Am, Bm, C, D, Em, A

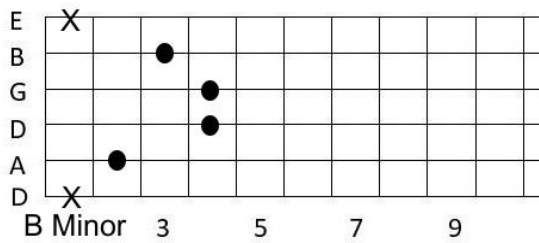
#### G Major



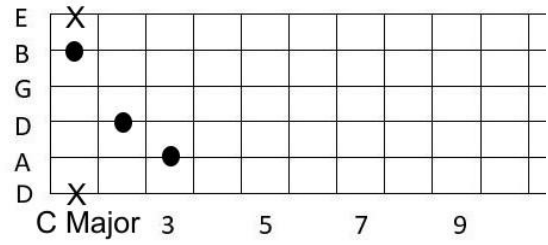
## A Minor



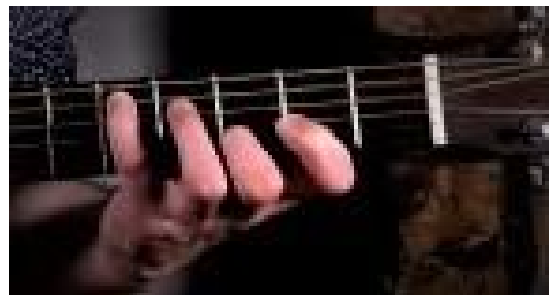
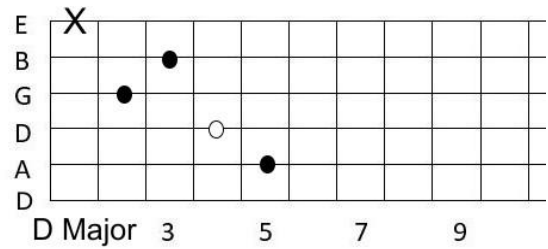
## B Minor



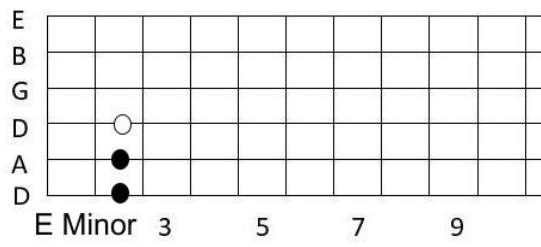
## C Major



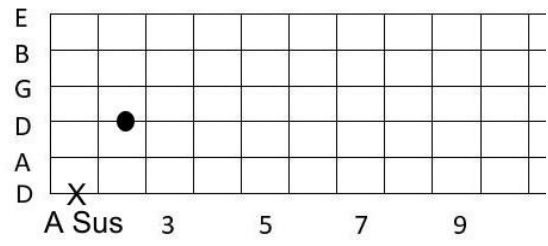
## D Major



## E Minor



## A Sus



Each part is an 8 bar structure which is then repeated (:|| meaning the part is repeated) before moving on to the next part. Bars containing two different chords are split evenly between each chord (2 beats each)

## Tae In The Bog

Jig in G Major

### Part A

| G Maj | G Maj | G Maj -> E Min | A Min -> D Maj |  
| G Maj | G Maj | E Min -> A Min | D Maj -> G Maj :||

### Part B

| G Maj | C Maj | G Maj -> E Min | A Min -> D Maj |  
| G Maj | C Maj | E Min | D Maj -> G Maj :||

## Fasten The Leg On Her

Jig in G Major

### Part A

| G Maj | G Maj | A Min | G Maj -> D Maj |  
| G Maj | G Maj | A Min | D Maj :||

### Part B

| G Maj -> D Maj | C Maj | E Min -> D Maj | D Maj |  
| G Maj -> D Maj | C Maj | A Min | D Maj :||

# Scatter The Mud

Jig in A Minor

## Part A

| A Min -> E Min | A Min | A Min -> D Maj | G Maj |  
| A Min -> E Min | A Min | G Maj | E Min -> A Min :||

## Part B

| A Min -> G Maj | E Min | A Min -> E Min | E Min -> A Min |  
| A Min -> G Maj | E Min | G Maj | E Min -> A Min :||

Notice/Remember that we are using the same chord set for A Minor that we use for accompanying in the key of G Major.

# Rolling In The Barrel

Reel in E Minor

## Part A

| E Min | G Maj -> D Maj | E Min | B Min |  
| E Min | G Maj -> D Maj | E Min | B Min -> E Min ||

## Part B

| E Min -> A sus | D Maj | E Min | B Min |  
| E Min -> A sus | D Maj | A Min | B Min || (\*)

(\*At very end of tune resolve to E Minor)

Parts not repeated for this particular tune.

Notice/Remember that we are using the same chord set for E Minor that we use for accompanying in the key of D Major.