



ORGANIZATION THEME

PRINCE2®

ORGANIZATION THEME AND THE PRINCIPLES

Principle - Defined roles and responsibilities

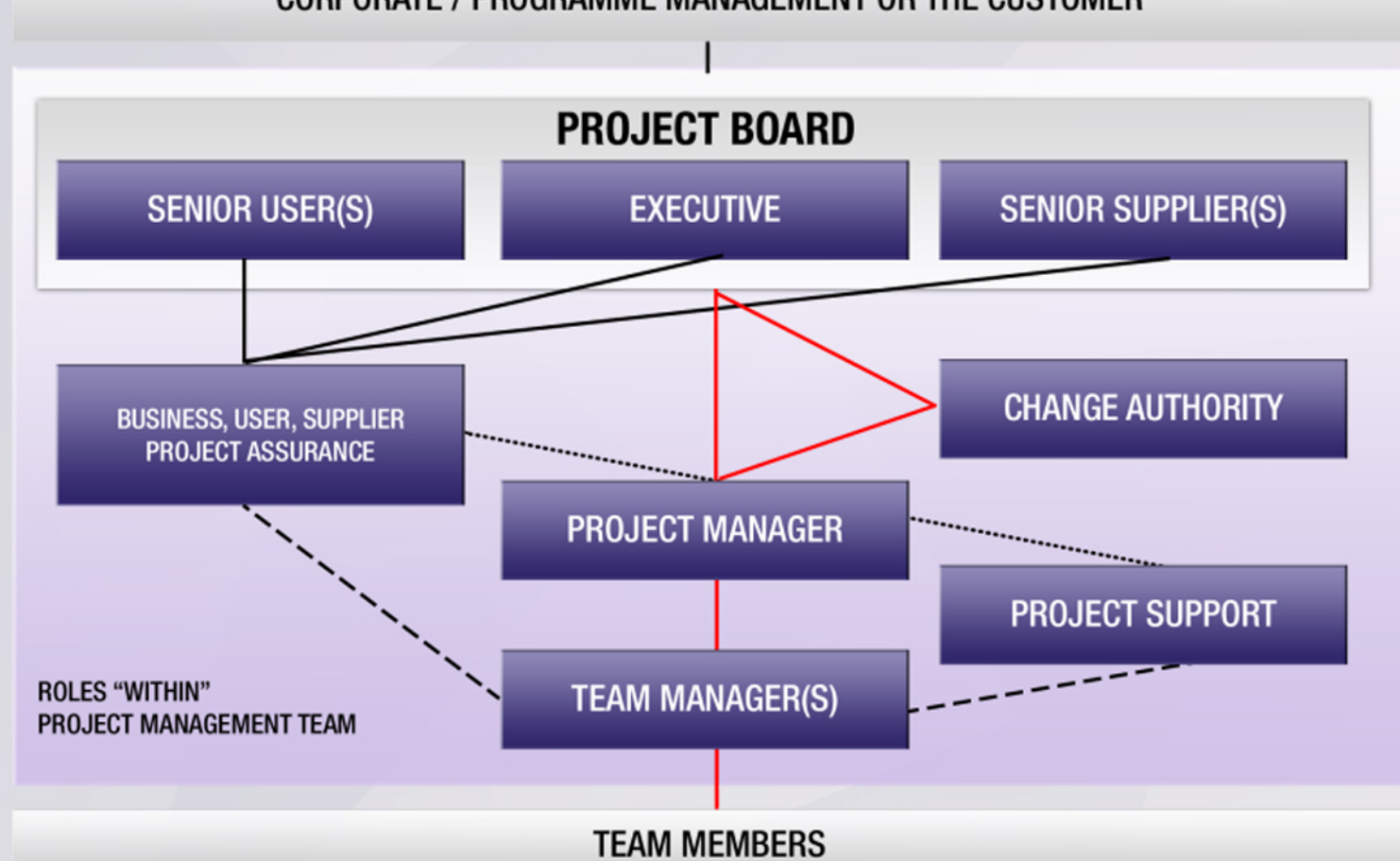
"A PRINCE2® project has defined and agreed roles and responsibilities with an organization structure that engages the business, user and supplier stakeholder interests."

- Ensures appropriate governance by defining responsibilities for directing, managing and delivering the project
- Clearly defines accountability at each level of management
- Communication Management Approach ensures effective information flow to and from key stakeholders

THE FOUR LEVELS OF MANAGEMENT



THE PROJECT MANAGEMENT TEAM

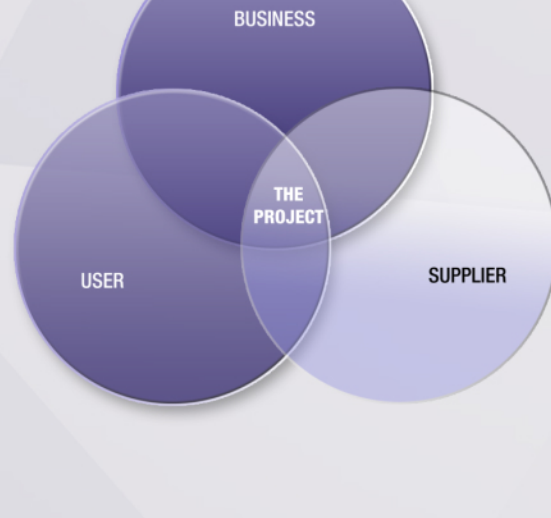


PRINCE2® DEFINES FUNCTIONAL "ROLES" NOT JOBS

PROJECT BOARD

Key Characteristics

- Need authority (make decisions & commit resource)
- Have credibility (will effect ability to 'direct')
- Ability to delegate (not involved in the 'detail')
- Available when needed (to decide and direct PM)

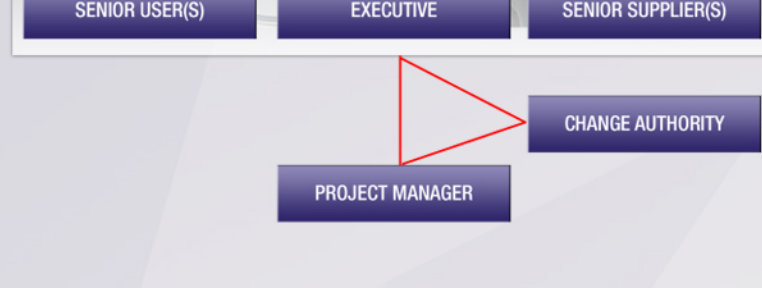


USER AND SUPPLIER GROUPS



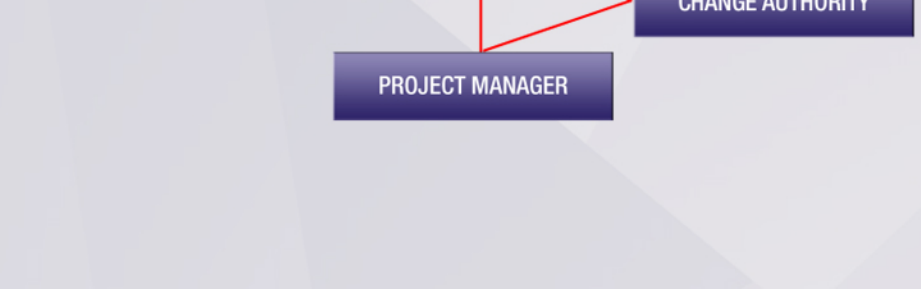
PROJECT ASSURANCE

- Project Board's responsibility
- Monitors all aspects of project performance and products
 - Business, User and Supplier perspectives
- May appoint to separate individuals
 - All or some tasks
 - Appointed from corporate / programme organization, or external organizations
 - Can be 'multiple' individuals
- **Independent** of Project Manager, Team Manager and Project Support



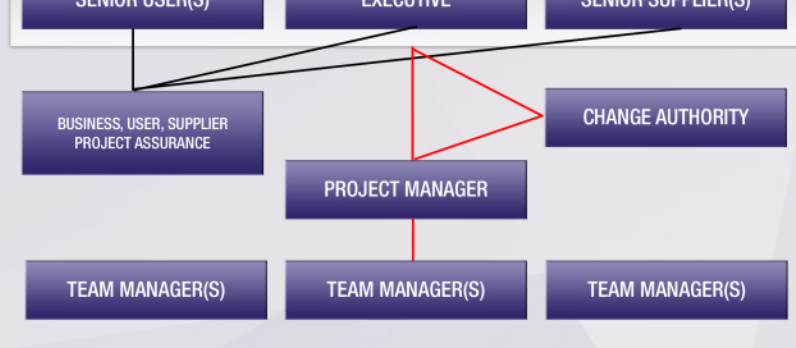
PROJECT MANAGER

- Normally from customer environment
- Single focus for day-to-day management
- Runs project on behalf of Project Board
- Produces plans and reports
- Manages Team Managers and Project Support
- Role **cannot** be shared



TEAM MANAGER

- Ensures products allocated by PM (via a work package) are produced to time/cost/quality and within agreed tolerances
- Reports to Project Manager - via checkpoint reports
- Raise issues & risks associated with work package
- Create team plans (if necessary)
- May be same person as PM, or separate person
- Maintain **independence** from Project Assurance



TAILORING ORGANIZATION

