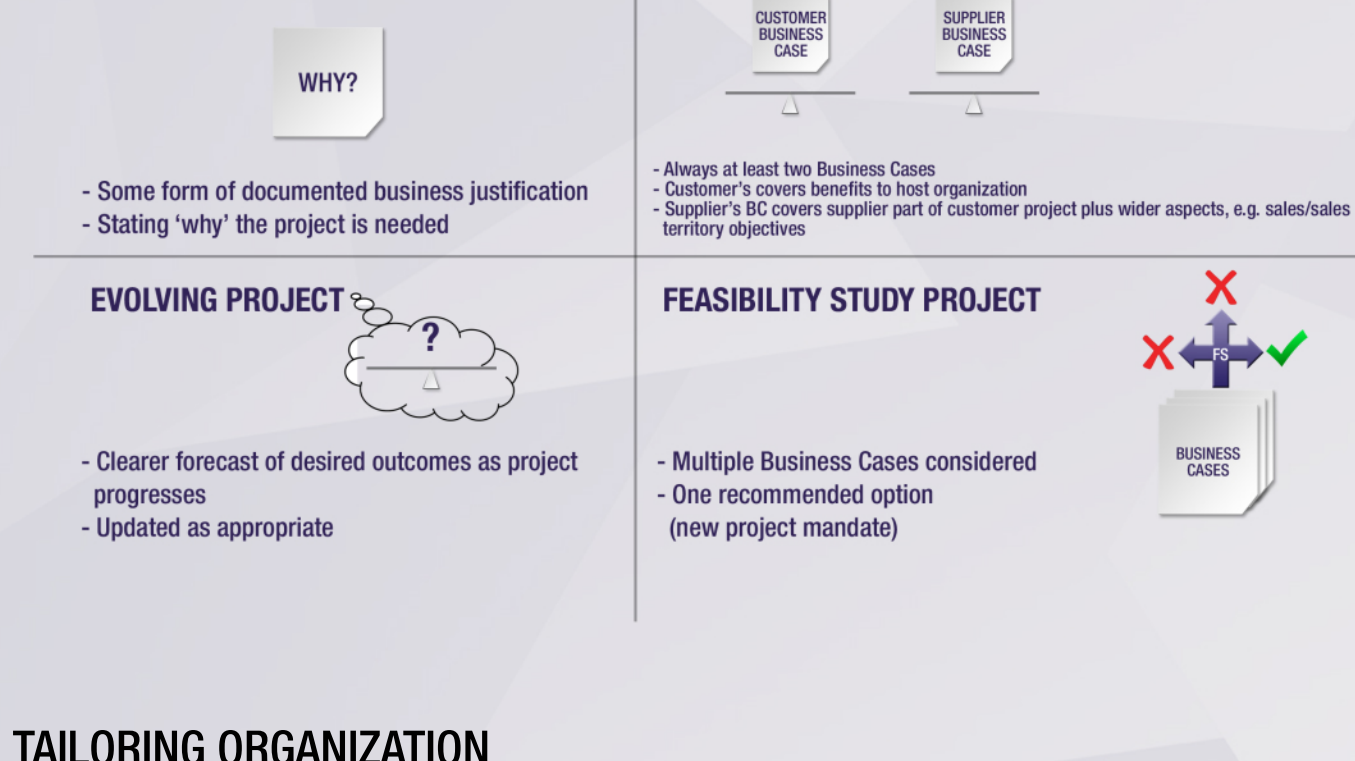


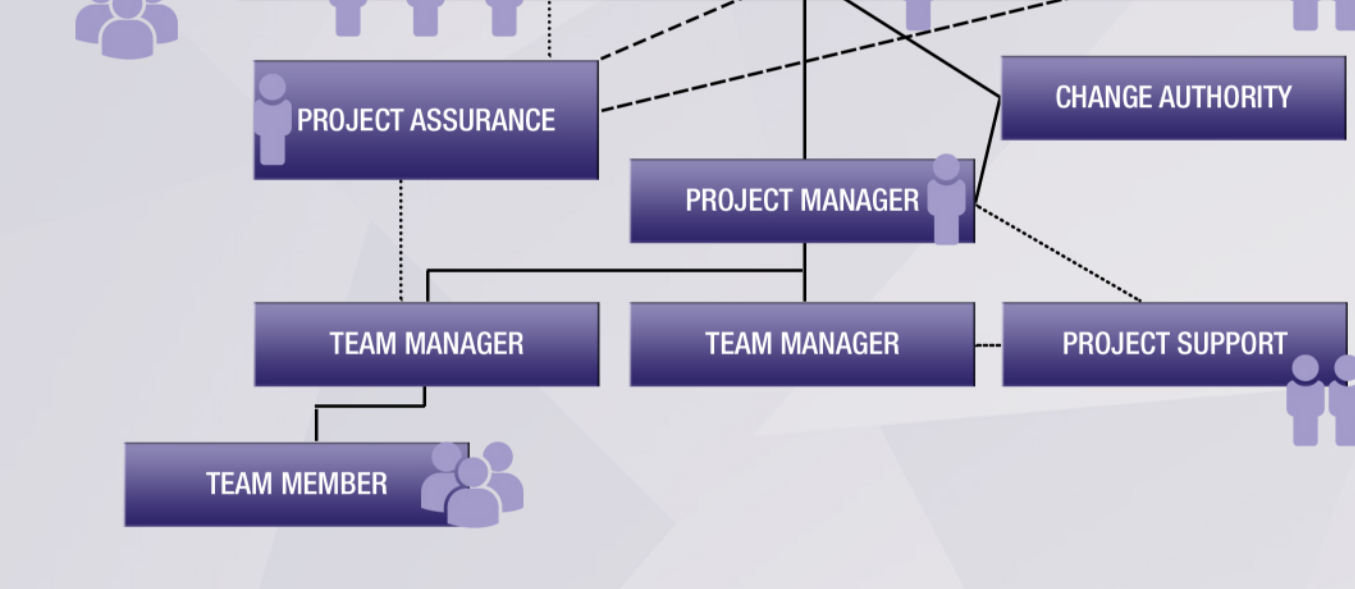
TAILORING THE PRINCIPLES

- CONTINUED BUSINESS JUSTIFICATION
- LEARN FROM EXPERIENCE
- DEFINED ROLES & RESPONSIBILITIES
- MANAGE BY STAGES
- MANAGE BY EXCEPTION
- FOCUS ON PRODUCTS
- TAILOR TO SUIT THE PROJECT

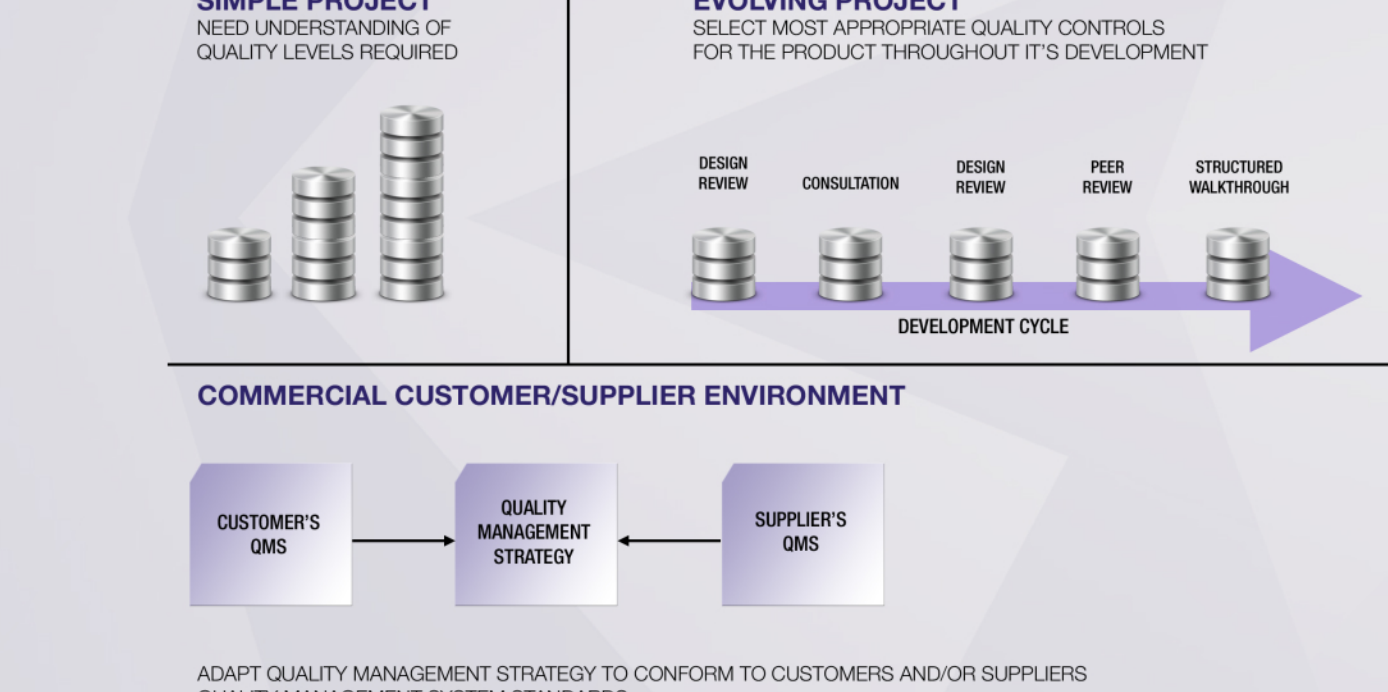
TAILORING THE BUSINESS CASE



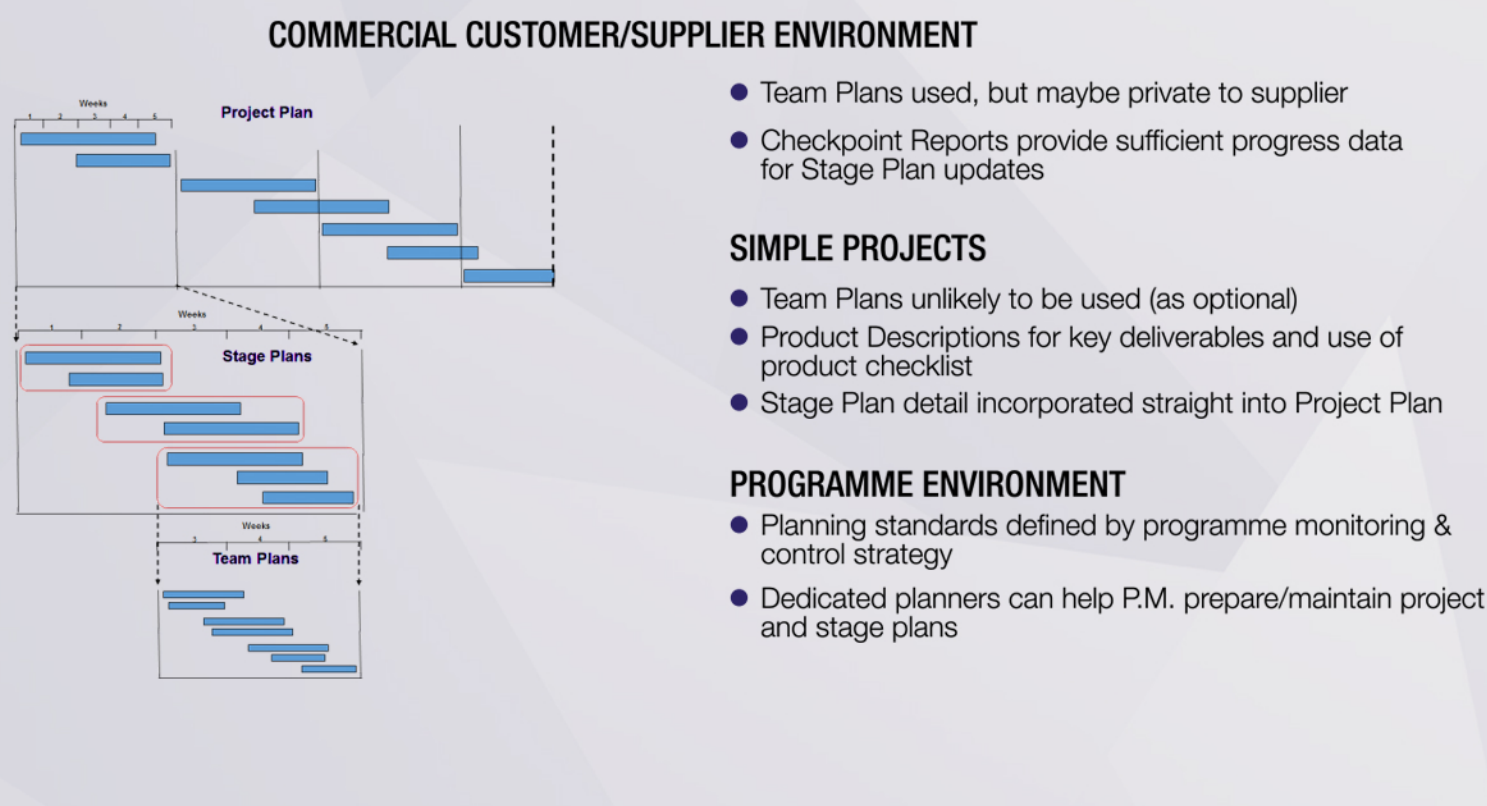
TAILORING ORGANIZATION



TAILORING QUALITY



TAILORING PLANS

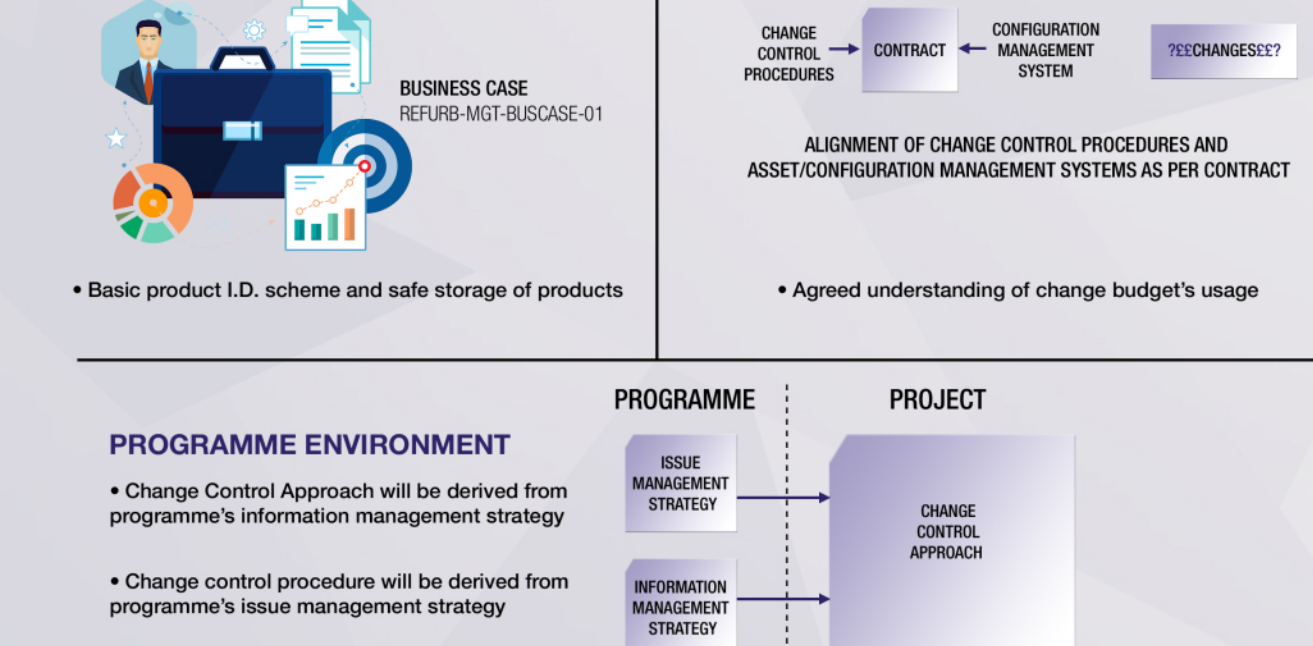


TAILORING RISK

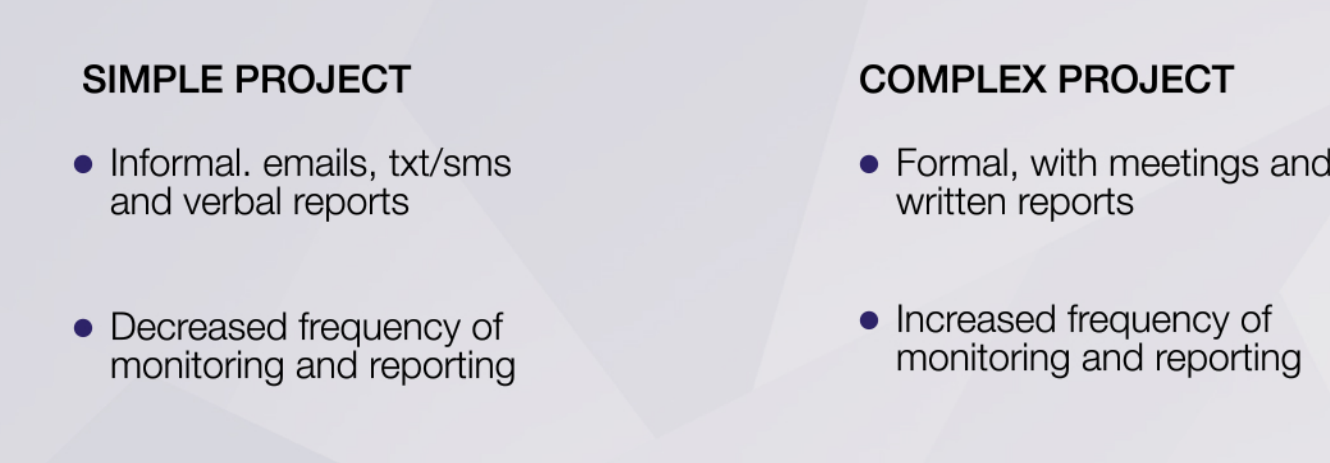
Tailor risk management procedure to each organization's corporate or programme management policies and standards

- **Complex/large projects** - more formal & frequent risk reviews
- **Simple/small projects** - less formal & frequent risk reviews

TAILORING CHANGE



TAILORING PROGRESS



TAILORING THE PROCESSES

- STARTING UP A PROJECT
- INITIATING A PROJECT
- DIRECTING A PROJECT
- CONTROLLING A STAGE
- MANAGING PRODUCT DELIVERY
- MANAGING A STAGE BOUNDARY
- CLOSING A PROJECT

PRACTITIONER EXAMINATION FORMAT

PRACTITIONER EXAM

- To assess ability to apply and tailor the method
- Scenario-based examination
- Two styles of objective test questions:
 - 'Classis Multiple Choice'
 - 'Matching'
- Open book examination – but you can only use the official PRINCE2® manual

The exam can be taken online or at an examination centre. Contact your learning service provider for more details.

PREPARING FOR THE PRACTITIONER EXAMINATION

- You must already know the PRINCE2 basics
- You must have one of the following pre-requisite qualifications
 - PRINCE2 Foundation
 - Project Management Professional (PMP)
 - Certified Associate in Project Management (CAPM)
 - IPMA Level A® (Certified Projects Director)
 - IPMA Level B® (Certified Senior Project Manager)
 - IPMA Level C® (Certified Project Manager)
 - IPMA Level D® (Certified Project Management Associate)
- You will also find the Practitioner resources essential:
 - PRINCE2 Manual.
 - Practitioner Tailoring Guide; Practitioner Syllabus; Candidate Guidance.
 - Sample Examination Paper with Answers Sheet and Rationale booklet.

PRINCE2® Practitioner Exam

PRINCIPLES

1) The Chief Executive Officer (CEO) of the record company require project to be recorded in a document called a 'project rationale'. 'project rationale' as part of the pre-project phase.

Which principle is being applied, and why?

A. 'Continued business justification', because the justification for recorded in some form of a business case.

B. 'Continued business justification', because it is the executive beginning of a project.

C. 'Learn from experience', because it is important to consider lessons learned from previous projects.

D. 'Learn from experience', because it is important to consider lessons learned from previous projects.

2) During the initiation stage, the Vice President stated that attendance evenings is low, and on previous projects this had resulted in lower attendance for this project. The project is held later in the week.

Which principle is being applied, and why?

A. 'Continued business justification', because the justification for recorded in some form of a business case.

B. 'Continued business justification', because it is the executive beginning of a project.

C. 'Learn from experience', because it is important to consider lessons learned from previous projects.

D. 'Learn from experience', because it is important to consider lessons learned from previous projects.