



Chess Openings

Question 1



White to play

What would you play here as White?



Chess Openings

Question 2



White to play

Black has just played the aggressive ...Nd4. What would you play here as White?

Hint: If you take the 'free' pawn on e5, does Black have an active reply?



Chess Openings

Question 3



Black to play

What do you think of the move ...dxc3?

Hint: Think in terms of development



Chess Openings

Question 4



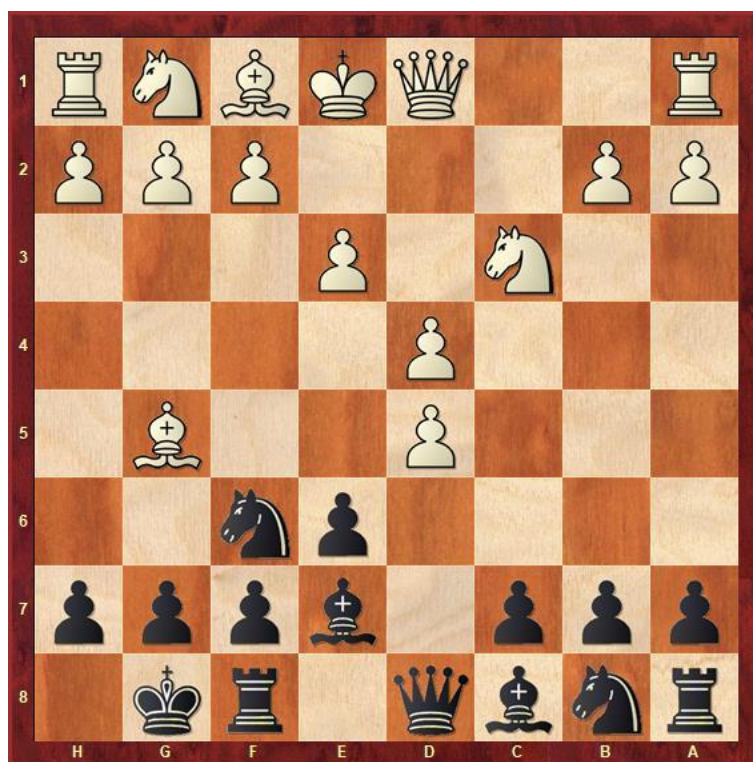
White to play

What do you think of the move $Nxf6+$, exchanging a knight for a bishop?



Chess Openings

Question 5



Black to play

White just played the move cxd5. How would you normally take the pawn back as Black?



Chess Openings

Question 6



White to play

Where would you castle here?