



Chess Openings

Question 1



White to play

This position can be reached after 3 moves by playing the moves 1.e4 e5 2.Nf3 d6 3.d4 Nd7.

How you would evaluate the move 4.dxe5 by White?



Chess Openings

Question 2



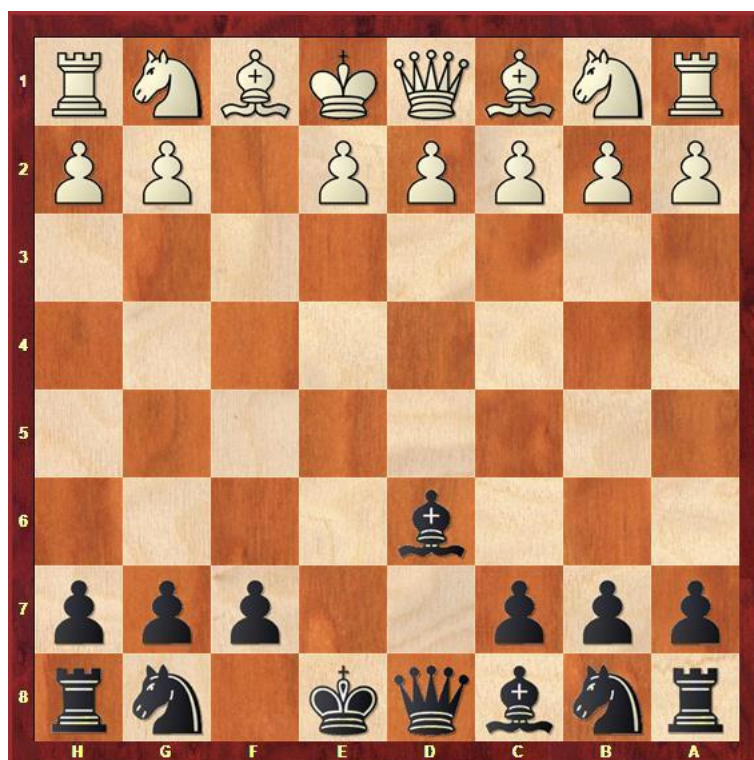
Black to play

Evaluate the move a5 by Black. Is it a good move?



Chess Openings

Question 3



White to play

Black has just played the move Bxd6 after sacrificing a pawn.

How would you evaluate this resulting position?